



➤ **Geofoam**

➤ **Insulation**

➤ **Packaging**



بريما فوم

www.primafoam-eg.com

Company Profile

Prima Foam. Located in The Second Industrial Zone . sector (8) Kom Ashim - Fayoum governorate. And away from Cairo about 40 km.com Ashim industrial zone is characterized as one of the first industrial zones set up in north in addition to its proximity to the capital.

Prima Foam Company was founded in 2008 by a group of foam industry experts in Egypt and established for the purpose of making thermal insulation foam panels (E PS& XPS) and also packaging products that manufactured from polystyrene material.

Prima Foam company starting its production by the end of 2012.

By 2014, according to an investment's plan placed previously , we added a new line to produce packaging foam that is a real addition to the investments and the growth of the company.

Because we have long experience in dealing with advanced production technology. As well as a leadership position in dealing with our customers. that ensures the continued growth and gain positive experiences in Prima Foam.

Prima Foam manufacturing a variety of slides (panels) for various specialized applications including insulate walls and ceilings and concrete spacers granules crushed foam packaging containers and also fish, vegetables and fruit. In addition to foam packaging equipment and products of different templates

Our customers are partners in success

نبذة عن الشركة

بريما فوم . تقع بالمنطقة الصناعية الثانية . قطاع ٨ بكم أو شيم - محافظة الفيوم . والتي تبعد عن القاهرة الكبرى بحوالي ٤٠ كم . وتتميز منطقته كوم أو شيم الصناعية بأنها من أوائل المناطق الصناعية التي أقيمت بشمال الصعيد بالإضافة إلي قريها من العاصمه .

تأسست شركه بريما فوم عام ٢٠٠٨ بجهود مجموعه من خبراء صناعة الفوم في مصر وأنشأت بغرض صناعة ألواح فوم العزل الحراري (E P S & X P S) وأيضا منتجات التغليف والتعبئه المصنعه من ماده البوليستيرين .

بدأت شركه بريما فوم طرح إنتاجها بالأسواق نهايه عام ٢٠١٢ . وبحلول عام ٢٠١٤ ووفقا لخطة إستثمارات وضعت مسبقا أضيف خط جديد لإنتاج وكبس فوم التغليف والتعبئه يمثل إضافه حقيقيه لإستثمارات ونمو الشركه .

ونظرا لما يتمتع به القائمون علي العمل بشركه بريما فوم من خبرات طويله في التعامل مع التكنولوجيا المتقدمه لعناصر الإنتاج . وكذلك الرياده في التعامل مع عملائها . فأن ذلك يضمن إستمرار النمو وإكتساب الخبرات الإيجابيه في بريما فوم .

تقوم بريما فوم بتصنيع مجموعه متنوعه من الشرائح (الألواح) للتطبيقات المختلفه والمتخصصه بما فيها عزل الحوائط والأسقف والفواصل الخرسانيه وحبيبات الفوم المجروش وأيضا عبوات تعبئه الأسماك والخضروات والفاكهه . إضافه إلي قوالب فوم تغليف الأجهزة والمنتجات المختلف

عملاؤنا شركاء في النجاح



Our Mission

We believe that excellence comes from providing innovative solutions for foam uses in different kinds of construction and packaging with high quality, according to standard international specifications that *meet the expectations and needs of our client consistent with free society and the environment* and our company to be a model of reference in the quality and diversity of its products and to maintain leadership and originality and precedes the ambitions of its clients in the level of services and development of our attention and complete our company staff and engineers and technicians to raise the technical and managerial competence and develop their performance through the system work upscale make them partners in the development and success.

Our Values

Seek to achieve a balance between our interests and the interests of our client and each aiming to Raise values.

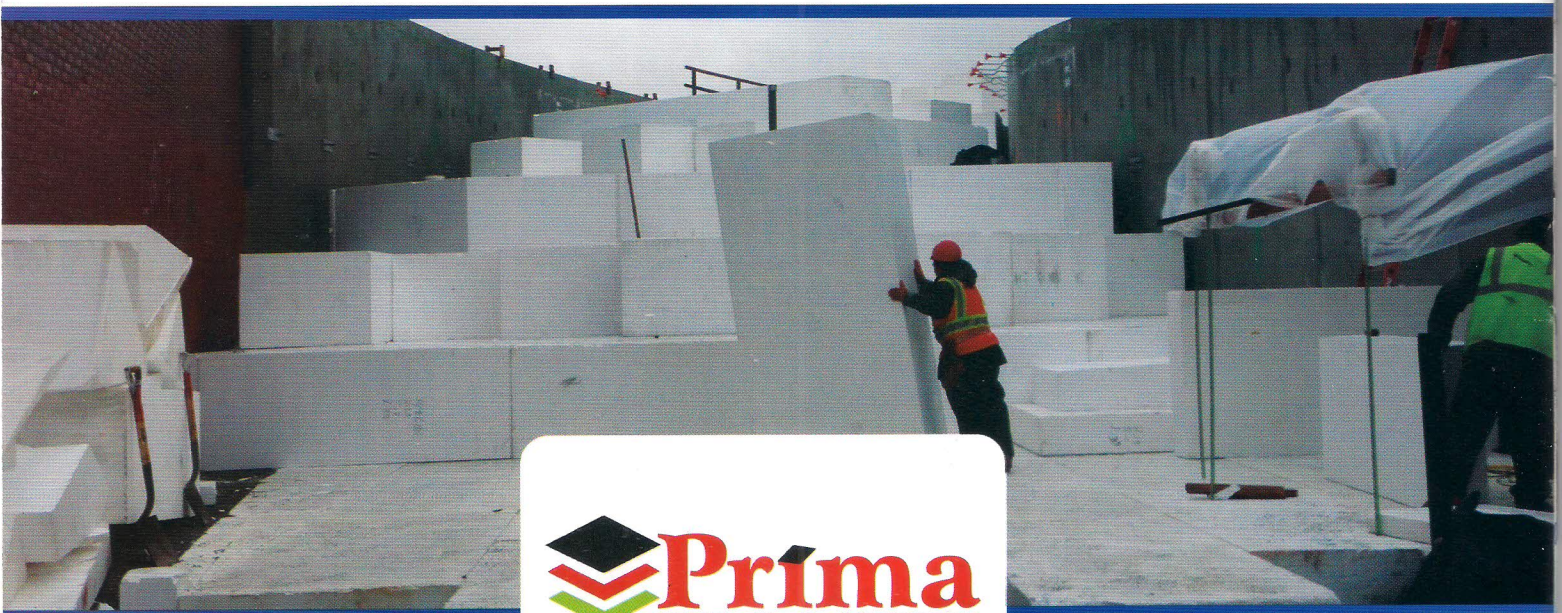
- make every effort to satisfy the customer.
- act with integrity and frankness, and the highest ethical standards.
- Conduct best business and most suitable for the production.
- Excellence in customer service.
- Generation and provide greater value to our customers by providing a range of value added services.
- Creativity and development and our belief that perfection is the secret of success of responsibility
- Social responsibility that are consistent with being an active member of the community.

Our Vision

To be one of the two largest companies in producing and processing the foam in Egypt with High quality technology , advanced and comprehensive technical experience and is characterized by a high diversity of our products and the multiplicity of alternatives at competitive prices.

Our products

- Insulation boards made of EPS
- Insulation boards made of XPS
- EPS beads for mixing with concrete
- EPS for packaging
- EPS boxes for fish, vegetables and fruits
- Seedling trays
- EPS blocks for Georgian applications



The logo for Prima FOAM features a stylized graphic of three stacked, overlapping shapes in black, red, and green, resembling a diamond or a stack of blocks. To the right of this graphic, the word "Prima" is written in a large, bold, red serif font. Below "Prima", the word "FOAM" is written in a smaller, blue, sans-serif font, with horizontal lines above and below the letters.

نؤمن بأن التميز ينبع من تقديم حلول مبتكرة لاستخدامات الفوم بأنواعه المختلفه للانشاءات والتعبئه والتغليف بجودة عاليه طبقا للمواصفات القياسيه العالميه التي تلبى توقعات واحتياجات عميلنا الكريم بما يتوافق مع خدمه المجتمع والبيئه وأن تكون شركتنا نموذجا مرجعيا متميزا في جوده وتنوع منتجاتها والحافظه علي الرياده والاصاله وتسبق طموحات عملائها في مستوي خدماتها وورقي المجتمع وتنميته وتكتمل رسالتنا باهتمامنا بموظفي ومهندسي وفنيين الشركه برفع كفاءتهم الفنيه والإداريه وتطوير أدائهم من خلال منظومه عمل رافيه تجعلهم شركاء في التنميه والنجاح .

قيمنا

السعى لتحقيق التوازن بين مصالحنا ومصالح عميلنا وإعلاء لكل القيم الهادفه

- بذل أقصى جهد لارضاء العميل .
- العمل بنزاهه مطلقه ومصداقيه ومصارحه وبأعلي معايير أخلاقيه .
- مزاوله العمل الدؤب لانتاج الافضل والانسب .
- التميز في خدمه العملاء .
- توليد وتوفير قيمه أكبر لعملائنا من خلال تقديم مجموعه من الخدمات ذات القيمه المضافه .
- الابداع والتطوير وإيماننا بأن الاتقان هو سر النجاح .
- المسئوليه الاجتماعيه التي تتفق مع كوننا عضو فاعل بالمجتمع .

رؤيتنا

أن تكون شركه بريما فوم هي واحده من أكبر شركتين لانتاج وتصنيع الفوم بمصر وذلك بتقنيه عاليه متقدمه وجوده شامله وخبره فنيه عاليه وأن تتميز منتجاتنا بالتنوع وتعدد البدائل بأسعار تنافسيه.

منتجاتنا

- فوم العزل الحرارى الممدد بكثافته المختلفه (EPS) .
- فوم العزل الحراري المشكل بالبتق (XPS) .
- حبيبات الفوم المجروش للخلطات الخرسانيه .
- فوم الفواصل الخرسانيه .
- قوالب تغليف الاجهزه والمعدات المختلفه .
- صناديق تعبئه المنتجات الغذائيه .



Primafill geofom physical properties per ASTM Specifications D 6817-02 and C 578-01

(Primafill 12)

(Primafill 15)

(Primafill 19)

(Primafill 22)

(Primafill 29)

(Primafill 40)

ASTM D 6817-02 CLASSIFICATIONS			EPS 12	EPS 15	EPS 19	EPS 22	EPS 29	TBD
Property	Units	ASTM Test						
Compressive Resistance at 1% Strain Deformation (2" cube) at 1% Strain Deformation (12" cube)** at 5% Strain Deformation (2" cube) at 10% Strain Deformation (2" cube)	Min psi (kPa)	D 1621, C 165	2.2 (15)	3.6 (25)	5.8 (40)	5.8 (40)	10.9 (75)	17.8 (123)
	Min psi (kPa)		3.2 (22)	4.6 (32)	6.2 (43)	6.2 (43)	11.9 (82)	19.6 (135)
	Min psi (kPa)		5.1 (35)	8.0 (55)	13.1 (90)	13.1 (90)	24.7 (170)	41.7 (287)
	Min psi (kPa)		5.8 (40)	10.2 (70)	16.0 (110)	16.0 (110)	29.0 (200)	45.0 (310)
Flexural Strength	Min psi (kPa)		10.0 (69)	25.0 (172)	30.0 (207)	40.0 (276)	50.0 (345)	75.0 (517)
Oxygen Index	Min volume %		24.0	24.0	24.0	24.0	24.0	24.0
Density, minimum	Min lb/ft3 (kg/m3)	C 303	0.70 (11.2)	0.90 (14.4)	1.15 (18.4)	1.35 (21.6)	1.80 (28.8)	2.5 (40)
ASTM D 6817-02 CLASSIFICATIONS			Type XI	Type I	Type VIII	Type II	Type IX	TBD
Property	Units	ASTM Test						
Thermal Resistance (R-value)* 75 ± 2° F (24 ± 1° C)	Min R* for 1" thickness	C 177, C 518	3.10 (0.55)	3.60 (0.63)	3.80 (0.67)	4.00 (0.70)	4.20 (0.74)	4.20 (0.74)
Compressive Resistance at 10% Strain Deformation (2" cube)	Min psi (kPa)	D 1621, C 165	5.0 (35)	10.0 (69)	13.0 (90)	15.0 (104)	25.0 (173)	40.0 (276)
Dimensional Stability Change in dimensions	Max %	D 2126	2.0	2.0	2.0	2.0	2.0	2.0
Moisture Resistance Water Absorption by total immersion Water Vapor Permeability of 1" (25.4 mm) thickness max perm	% by volume Max	C 272 E 96	4.0	4.0	3.0	4.0	2.0	2.0
	Max perm/in (ng/Pa*s*m2)		5.0 (287)	5.0 (287)	3.5 (201)	5.0 (287)	2.0 (115)	2.0 (115)
Flexural Strength	Min psi (kPa)		25.0 (173)	25.0 (173)	30.0 (208)	35.0 (240)	50.0 (345)	75.0 (517)
Oxygen Index	Min volume %		24.0	24.0	24.0	24.0	24.0	24.0
Density, minimum	Min lb/ft3 (kg/m3)	C 303	0.90 (15)	0.90 (15)	1.15 (18)	1.35 (22)	1.80 (29)	2.5 (40)

**"R" means resistance to heat flow. The higher the R-value, the greater the insulating power.



Primafill:

Lightweight, Durable and Versatile

Primafill Expanded Polystyrene (EPS) geofoam is a lightweight cellular plastic foam used in block or board form for a wide range of geotechnical applications. Primafill is often used in place of natural fill on building or road construction projects where soft soil exists. Its weight-to-strength load bearing characteristics are uniquely effective in reducing the weight burden on underlying soil without sacrificing compressive strength. EPS has proven to be the most cost-effective, versatile and long-lasting of all the various cellular foam varieties, and the use of EPS geofoam in engineered construction applications is growing rapidly.

Geofoam has performed extremely well in projects where conventional earth fills such as foamed concrete, wood chips, waste tires and cinders have shown a history of poor performance and failure.



 **Prima**
FOAM

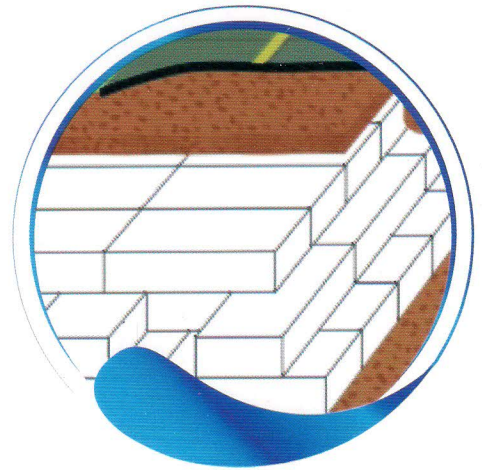
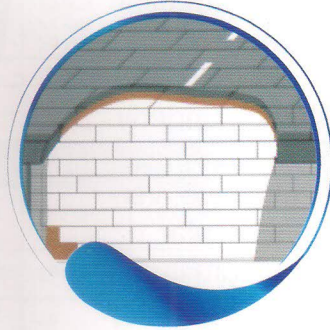
Primafill Applications

Primafill is often used as lightweight fill for building and road construction on soft and unstable soil, ground stabilization and pavement or sub-slab insulation.

Road Embankments

Primafill is up to 50 times less massive than traditional lightweight fills (chipped bark, sawdust, cinders, cellular concrete, etc.), providing:

- Maximum available right-of-way
- Faster construction schedule
- Lower traffic impact
- Cleaner construction
- Reduced labor
- Minimal future maintenance



Retaining Wall or Abutment Backfill

Primafill positioned behind retaining structures and below-grade walls reduces lateral pressure, lowers settlements, improves waterproofing and provides better insulation. Primafill can also limit horizontal forces against retaining structures during earthquakes.



Primafill Applications

Slope Stabilization

Primafill's extremely low density makes it highly effective in improving the stability and safety of slope construction by minimizing the potential of failure surfaces between driving blocks and resisting blocks in a slope.

Pavement Insulation

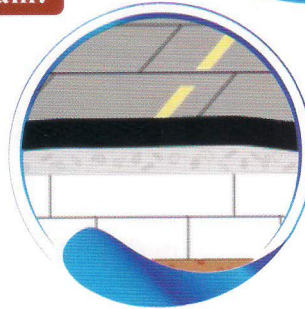
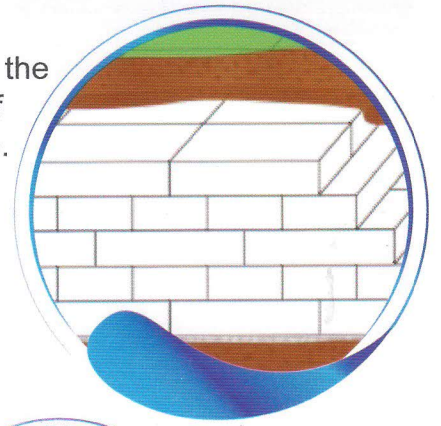
Primafill is often used as highway, airport runway and parking lot pavement subgrade insulation, reducing subgrade stress and deformation and to protect against frost heaving.

Other Uses Include:

- Roadway Sound Barriers
- Foundation Fill / Insulation
- Plaza Decks
- Levees / Dikes / Berms
- Landscape Design

Types of Primafill Geofoam:

- (Primafil) 12
- (Primafil) 19
- (Primafil) 29
- (Primafil) 15
- (Primafil) 22
- (Primafil) 40



Primafill Advantage

Low Density/High Strength

The density of Primafill ranges from 1 to 2% of the density of soil and rock, making it a superior, ultra lightweight fill material that significantly reduces the stress on underlying subgrades. The lighter load reduces settlements and increases stability against bearing and slope failures.

Thermal Insulation

Primafill is 98-99% air by volume, making it a highly efficient thermal insulator.

Variable Densities

Primafill geofoam can also be produced in a range of densities to meet varying needs. Higher densities, for example, provide higher R-values for greater insulation properties and lower deformation.

No Leachates

Will not contaminate the surrounding environment

Durable

High compressive strength makes Primafill durable and resistant to damage and shifting over time.

Low moisture absorption

Moisture absorption rates decrease as density increases, but are still minimal.



Primafill Advantage

Low interface friction

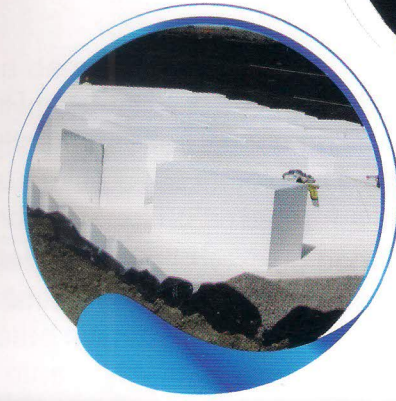
In direct shear tests the interface friction between sand and Primafill is comparable to the internal friction of sand alone.

Inert

Experiences no physical breakdown during prolonged burial.

Design Flexibility

Typically is used in block form that can be cut into various shapes and sizes as needed.



 **Prima**
FOAM

Innovative Primafill Geofoam based Stadium Savers provides a better tiered seating platform system

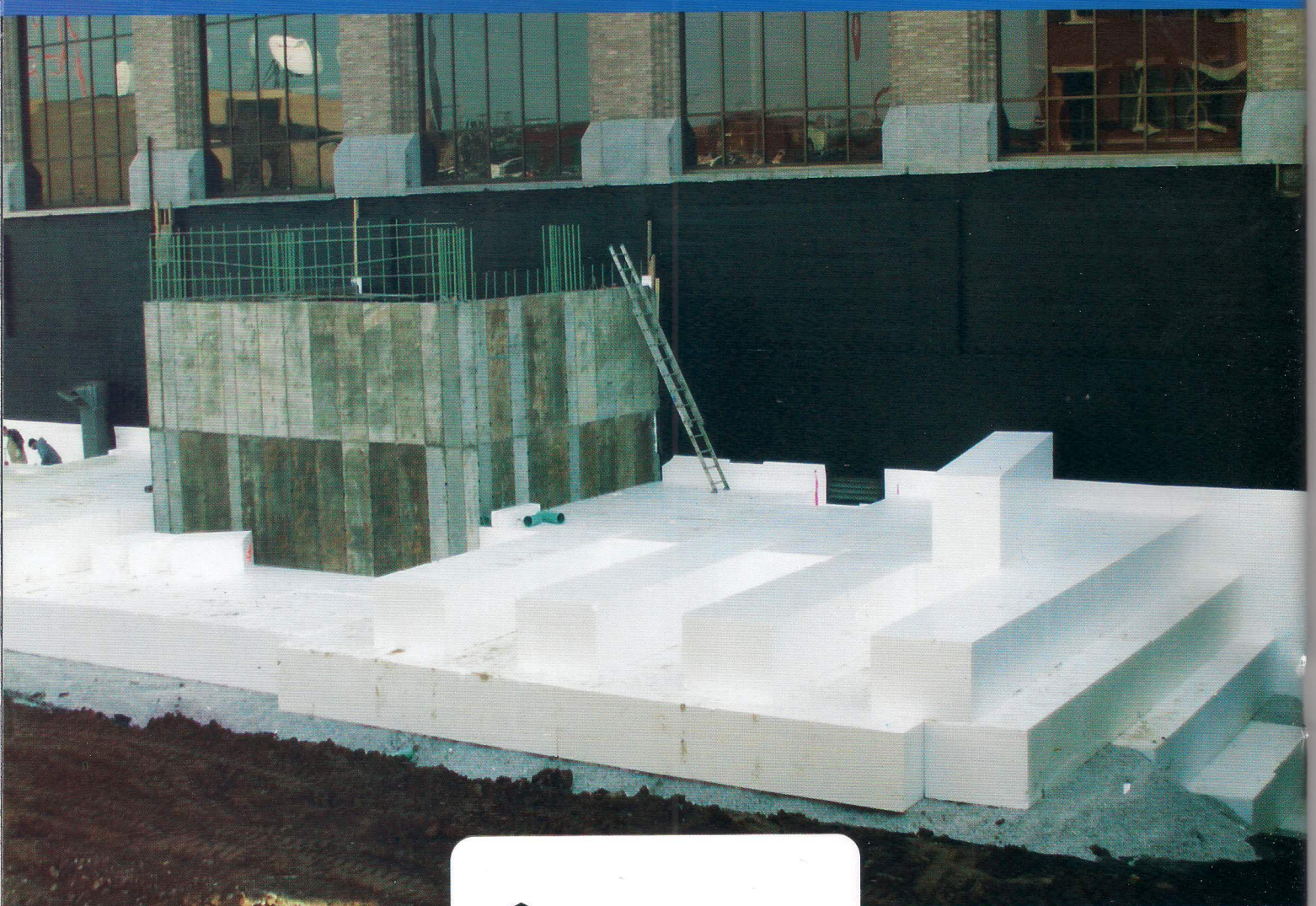
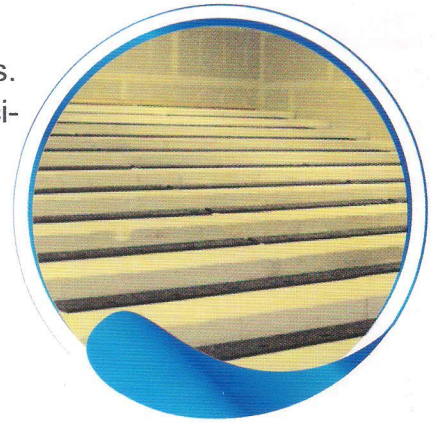
Project:

Stadium Savers is an innovative tiered seating platform system growing in popularity for a variety of applications such as movie theaters, auditoriums, school gymnasiums, churches and other tiered structures. The Stadium Saver system can be adapted to any tiered seating specification, and is regularly used for either straight or radiused tiers, in both new construction and renovation projects.

Product:

The tiers are formed by stacking custom cut or contoured Primafill Geofoam blocks in the desired seating configuration, directly on a flat concrete or prepared subsoil floor. The blocks are stacked layer by layer until the entire tiered layout is formed.

Primafill is ultra lightweight expanded polystyrene (EPS) geofoam blocks with unmatched weight-to-strength load bearing and compressive resistance characteristics.



The Challenge

Movie theaters, schools and any other platform seating projects, whether new construction or renovation, typically have tight budget parameters and limited timeframes in which to complete construction.

Stadium Savers has gained preference because it provides a tiered system of equal or greater structural integrity to alternative tiered seating platform systems, at less cost, with expedited construction timeframes.

Concrete-based methods such as dirt backfill, structural steel and stringers, precast concrete, uni-strut structural steel, and light gauge metal and metal studs all have specific benefits. None, however, install as quickly as Stadium Savers, and most are more expensive and involve far heavier materials.

Performance

- Construction time is expedited to such a degree that, opposed to other systems, contractors typically install the tiers last, allowing tradesmen to install ceiling and mechanical fixtures from level ground without obstacles.
- The system involves far fewer parts, and requires no time or expense to form and pour the vertical concrete surface.
- Primafill provides a solid acoustical foundation rather than the hollow sensation created by metal stud systems, and equal or better structural integrity to all other systems.



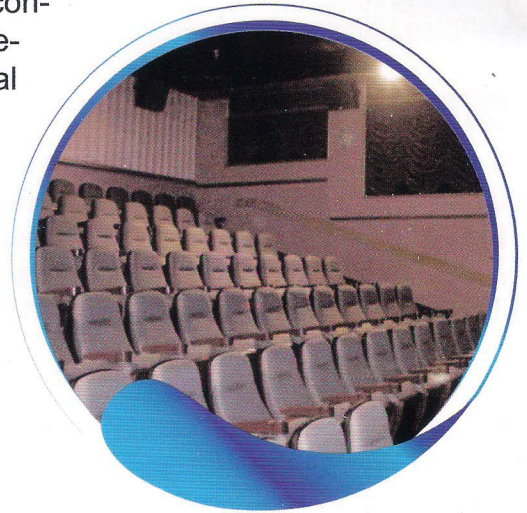
 **Prima**
FOAM

- The Primafill specified in most jobs weighs no more than one pound per cubic foot, creating a significant weight savings. This can be especially valuable in minimizing the weight burden in seating spaces built above ground
- In addition to the savings on labor, Stadium Savers delivers a 5-50% savings on materials over alternative systems

Common Applications for Primafill Geofoam

Primafill has very low density, good insulation, low hydraulic conductivity, and strength and deformation properties that complement soil behavior. It is suited for a wide range of geotechnical engineering applications including

- Lightweight fill for building and road construction on soft ground
- Roadway and runway sub-grade and foundation insulation
- Slope stabilization
- Landscape design

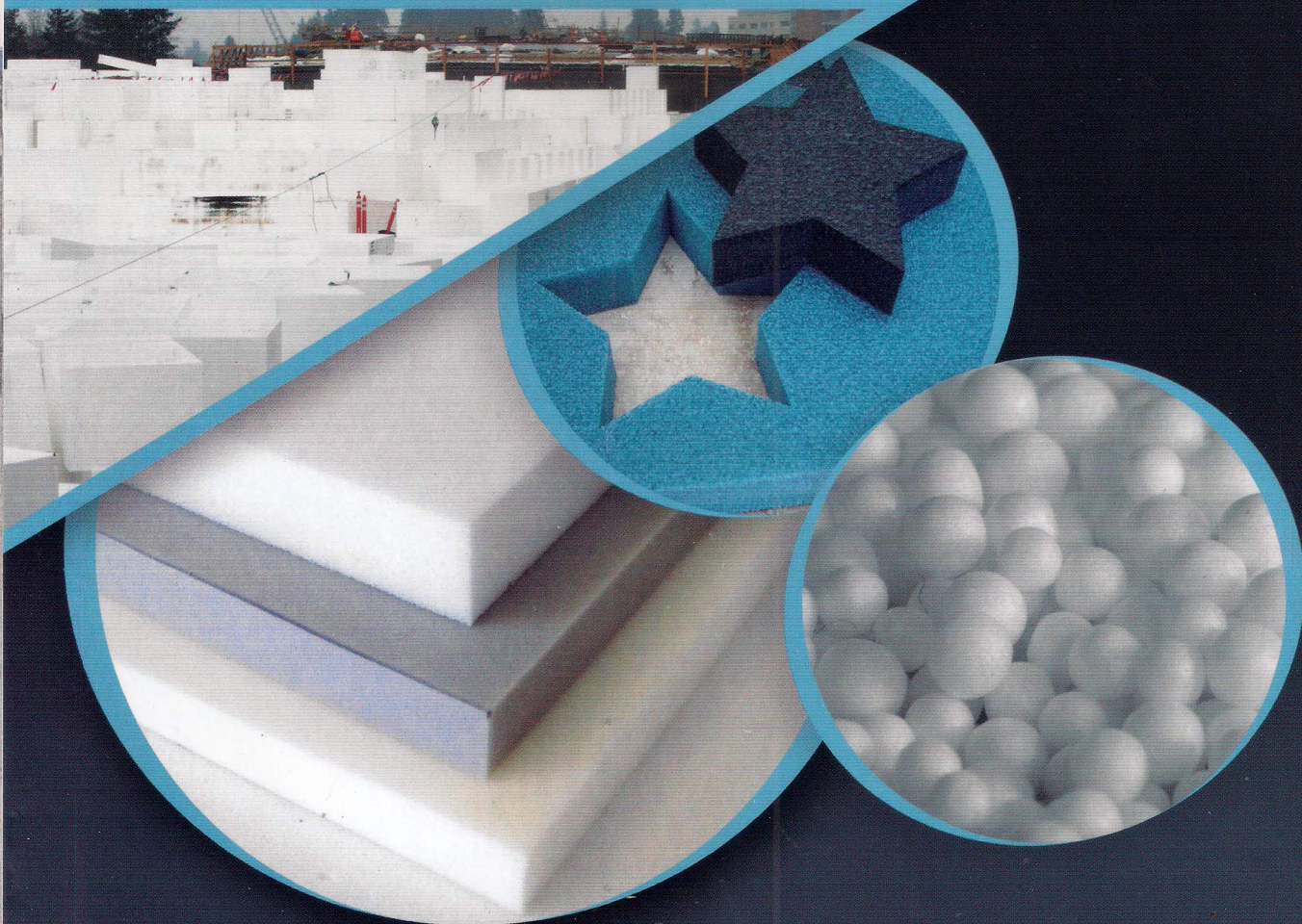




**Prima**
FOAM

www.primafoam-eg.com

XPRIME
01227003319



El Fayum - Kom Oshim- industrial zone- second stage- sector (8)

Tel. : (002) 015 377059 - (002) 015 366586

Mob.: (002) 01025929230 - (002) 01025929055